

## MEDIA INFORMATION

### ADMINISTRATIVE STAFF (509-335-0311)

*Bohler Athletic Complex 110, Pullman, WA 99164-1602*  
 Jim Sterk, Director of Athletics  
 Ken Casavant, Faculty Athletics Representative  
 Marcia Saneholtz, Senior Associate Director of Athletics/SWA  
 John Johnson, Senior Associate Director of Athletics  
 Anne McCoy, Senior Associate Director of Athletics  
 Pam Bradetich, Associate Director of Athletics  
 (Student-Athlete and Staff Development)  
 Brady Crook, Associate Director of Athletics (Major Gifts)  
 Pete Isakson, Associate Director of Athletics  
 (External Operations)  
 Bill Drake, Assistant Director of Athletics  
 (Athletic Training Services)  
 Ernie Housel, Special Assistant to the AD  
 Leslie Johnson, Assistant Director of Athletics  
 (Business Operations)  
 Rob Oviatt, Assistant Director of Athletics  
 (Physical Development)  
 Steve Robertello, Assistant Director of Athletics  
 (Compliance)  
 John David Wicker, Assistant Director of Athletics  
 (Event and Facility Operations)  
 Chris Cook, Director of Academic Services  
 Leslie Cox, Director of Marketing  
 Dan Meyer, Director of Ticket Operations  
 Kurt Mueller, Manager of Computer Support Services  
 Milton Neal, Director of Equipment Operations  
 Pippa Pierce, Director of Career and Personal Development  
 Scott Vik, Director of Sports Video

### MEDIA RELATIONS (509-335-COUG)

*Bohler Athletic Complex 195, Pullman, WA 99164-1602*  
 Rod Commons, Assistant Director of Athletics/Sports  
 Information Director (H/332-8309)  
 Football/rodco@wsu.edu  
 Linda Chalich, Assistant Director (H/334-2921)  
 Volleyball/Track/lindak@wsu.edu  
 Craig Lawson, Assistant Director (H/338-4556)  
 M-Basketball/craigl@wsu.edu  
 Jason Krump, Assistant Director (H/432-1828)  
 W-Basketball/jkrump@wsu.edu  
 Jason Hickman, Assistant Director (H/432-8474)  
 Football/jrhickman@wsu.edu  
 Ilsa Gramer, Graduate Assistant (H/208-406-9181)  
 Soccer/Baseball/igramer@wsu.edu  
 Danny Barnts, Student Assistant  
 Missy Enfield, Student Assistant  
 Rachel Engrissei, Student Assistant  
 Rebecca Faulds, Student Assistant  
 M-Basketball/rfaulds@mail.wsu.edu  
 Joe Nickell, Student Assistant  
 Rachel Porter, Student Assistant

### BASEBALL (509-335-0310)

*Bohler Athletic Complex M40, Pullman, WA 99164-1602*  
 Don Marbut, Head Coach  
 Ryan Brust, Assistant Coach  
 Travis Jewett, Assistant Coach

### MEN'S BASKETBALL (509-335-0240)

*Bohler Athletic Complex M42, Pullman, WA 99164-1602*  
 Dick Bennett, Head Coach  
 Tony Bennett, Associate Head Coach  
 Mike Heideman, Assistant Coach  
 Ben Johnson, Assistant Coach  
 Ron Sanchez, Coordinator of Basketball Operations

### WOMEN'S BASKETBALL (509-335-0276)

*Bohler Athletic Complex 220, Pullman, WA 99164-1602*  
 Sherri Murrell, Head Coach  
 Lisa Fisher, Assistant Coach  
 Chris Holland, Assistant Coach  
 Mark Lewis, Assistant Coach  
 Sarah Holland, Coordinator of Basketball Operations

### M/W GOLF (509-335-0224)

*Bohler Athletic Complex M37, Pullman, WA 99164-1602*  
 Walt Williams, Head Coach  
 Kari Sampson, Assistant Coach

### SWIMMING (509-335-0273)

*PEB 111, Pullman, WA 99174-1602*  
 Erica Quam, Head Coach  
 Suzanne Yee, Assistant Coach

### SOCCER (509-335-0306)

*Bohler Athletic Complex M10, Pullman, WA 99164-1602*  
 Matt Potter, Head Coach  
 Kirk Nelson, Assistant Coach  
 Lindsey Jorgensen, Assistant Coach

### ROWING (509-335-0309)

*Bohler Athletic Complex M25, Pullman, WA 99164-1602*  
 Jane LaRiviere, Head Coach  
 Janey Charlton, Assistant Coach/Novice Coach  
 Michael Stahlman, Assistant Coach

### TENNIS (509-335-0308)

*Bohler Athletic Complex M40, Pullman, WA 99164-1602*  
 Lisa Hart, Head Coach  
 Krissy Stubbs, Assistant Coach

### M/W TRACK/CC (509-335-0248)

*Bohler Athletic Complex M10, Pullman, WA 99164-1602*  
 Rick Sloan, Head Coach  
 Debra Farwell, Associate Coach  
 Mark Macdonald, Assistant Coach  
 Kris Grimes, Assistant Coach  
 Jason Drake, Head CC Coach/Assistant Coach  
 Ellannee Richardson, Assistant Coach

### VOLLEYBALL (509-335-0277)

*Bohler Athletic Complex 230, Pullman, WA 99164-1602*  
 Brian Heffernan, Head Coach  
 Jody Garry, Assistant Coach  
 Kevin Wray, Assistant Coach

### FOOTBALL (509-335-0250)

*Bohler Athletic Complex 102, Pullman, WA 99164-1602*  
 Bill Doba, Head Coach  
 Robb Akey, Defensive Line/DC  
 Leon Burnett, Linebackers  
 Ken Greene, Secondary  
 Mike Levenseller, Wide Receivers/OC  
 Robin Pflugrad, Assistant Head Coach/OR/RC  
 Timm Rosenbach, Quarterbacks  
 Kelly Skipper, Running Backs  
 Mike Walker, Defensive Line  
 George Yarno, Offensive Line  
 Shawn Deeds, Coordinator of Football Operations  
 Don Bartel, Graduate Assistant  
 Fred Shavies, Graduate Assistant  
 Al Genatone, Student Assistant  
 Josh Shavies, Student Assistant

### MEDIA SERVICES

TELEPHONES: Visiting media, including play-by-play radio stations, can order phones from Verizon, 800-483-6000.

WEBSITE: WSU's home page of sports information, including all releases, game summaries and stats, are available through the Internet at <http://www.wsucougars.com>

WORKING CREDENTIALS: At least one week before a Washington State home basketball game, working members of the press (writers, photographers and broadcasters) should reserve credentials and space on press row.

CREDENTIAL PICKUP: Press credentials are available at the Athletic Media Relations Office prior to game day. Otherwise, all credentials will be left at the tunnel entrance on the Southeast side of the Beasley Performing Arts Coliseum.

PHOTOGRAPHERS: Photo passes should be ordered just as the working press credentials. Photographers can work from either end of the court. No photographer is permitted to shoot from the sidelines at any time. A green photo vest will be provided to photographers and must be worn at all times. Photographers that do not follow these guidelines will be removed from the facility.

PARKING PASSES: A limited number of season passes are available to those Washington State beat writers, photographers and broadcasters. "R" passes permit media members to park along North Fairway Road. Single-game "A" passes are also available which allow members to park in the lot south of the Beasley Performing Arts Coliseum.

INTERVIEW POLICY: Media representatives wishing to arrange an interview with head coach Dick Bennett should contact the WSU Athletic Media Relations Office. Morning interviews are preferable. All interviews with Washington State players should be conducted early in the week, preferably Monday or Tuesday. Interview requests must be made at least 24 hours in advance through the Athletic Media Relations Office. Players will not be available for interviews the day of a game prior to tip-off.

POSTGAME INTERVIEWS: At all home games, head coach Dick Bennett and requested WSU players will address the media after a 10 minute cooling off period. The opponent coach and selected players will be made available outside the visitors locker room.

MEDIA SERVICES: Programs, game notes and other information will be provided to each member of the media in Beasley Coliseum, room 30. Play-by-play accounts and statistics are provided after each half. A complete statistics package with quotes are available after the game.

TELEPHONES: The Athletic Media Relations Office also has four phones available in the media room at the conclusion of the game.

PRACTICE: The Washington State basketball team practices at Friel Court of the Beasley Performing Arts Coliseum and the Physical Education Building, room 144. WSU basketball practices are closed, unless otherwise announced. Media wishing to attend practice should contact the Athletic Media Relations Office 24 hours in advance to make arrangements.

# MEDIA INFORMATION

## WSU MEDIA

### NEWSPAPERS

THE SPOKESMAN-REVIEW (AM). W. 999 Riverside, Spokane, WA 99210-1615. (509) 459-5500. FAX (509) 459-5234. SE - Joe Palmquist. Columnists - John Blanchette. WSU Beat - Glenn Kasses.

DAILY NEWS (PM). 409 S. Jackson, Moscow, ID 83843. (208) 882-5561. FAX (208) 883-8205. SE - Michael Sudhalter. Columnist - Harry Missildine. WSU Beat - Tom Fox.

LEWISTON TRIBUNE (AM). 505 'C' Street, Lewiston, ID 83501. (208-743-9411. FAX (208) 746-1185. SE - Jim Browitt. Writers - Doug Bauer, Dale Grummert (all write columns).

THE NEWS TRIBUNE (PM). PO Box 11000, Tacoma, WA 98411. (800) 388-8742. FAX (253) 597-8274. SE - Dale Phelps. WSU Beat - Darrin Beene.

SEATTLE POST-INTELLIGENCER (AM). 101 Elliott, Seattle, WA 98119. (206) 448-8373. FAX (206) 448-8164. SE - Ron Matthews. Writer - Dan Raley. Columnist - Art Thiel.

SEATTLE TIMES (AM/PM). Fairview North and John Sts., Seattle, WA 98111. (206) 464-2279. FAX (206) 464-3255. SE - Cathy Henkel. Columnist - Steve Kelley. WSU Beat - Craig Smith.

TRI-CITY HERALD (AM). P.O. Box 2608, Kennewick, WA 99302. (509) 582-1500. FAX (509) 582-1510. SE - Jeff Morrow. Columnist - Hec Hancock. WSU Beat - Mark McKenna.

DAILY EVERGREEN (AM). Murrow Hall 113, Pullman, WA 99164-2510. (509) 335-4573. FAX (509) 335-7401.

ASSOCIATED PRESS. W. 926 Sprague, PO Box 2173, Spokane, WA 99201. (509) 624-1258. FAX (509) 747-7641. Nick Geranios or John Wiley.

### TELEVISION

KXLY-TV (ABC, Channel 4). W. 500 Boone, Spokane, WA 99201. (509) 324-4040. FAX (509) 327-3932. SD - Dennis Patchin, Associate SD - Rick Lukens. Reporter - Derek Agnew, Allison Leep.

KREM-TV (CBS, Channel 2). S. 4103 Regal, Spokane, WA 99203. (509) 838-7371. FAX (509) 448-6397. SD - Tom Hudson. Reporter - Mark McClune.

KHQ-TV (NBC, Channel 6). P.O. Box 600, Spokane, WA 99210-0600. (509) 448-3241. FAX (509) 448-4644. SD - John Fritz. Reporter - Derek Deis.

KLEW-TV (CBS, Channel 3). 2626 17th Street, Lewiston, ID 83501. (208) 746-2636. FAX (208) 746-4819. SD - Jenni Vesnaver.

### RADIO

KCLX Radio (1450). Almota Road, Colfax, WA 99111. (509) 397-3441. FAX (509) 397-4752. Sports - Steve Grubbs.

KXLY Radio (920). W. 500 Boone, Spokane, WA 99201. (509) 329-4306. Sports - Bud Nameck.

## COUGAR BASKETBALL RADIO NETWORK



### BUD NAMECK

Bud Nameck is the host of the Morning News on Newsradio 920 KXLY in Spokane, Wash., and the program director for Newsradio 920 and ESPN Radio, AM 630 The Score.

Nameck has covered sports in the Inland Northwest since 1980. He has been the voice of Washington State University basketball for the past 11 years, and is a member of the Cougar football radio broadcast crew. Nameck handled the television play-by-play of Washington State Cougar basketball for six years and football for 12 years on what is now Fox Sports Net Northwest.

The 1994 Sportscaster of the year in the state of Washington, Nameck was the Sports Director of KXLY TV/AM/FM for 13 years, before taking over as the Director of Birdies Golf Center in Spokane. Under his direction and marketing, Birdies was named the best new golf range in America by Golf Range Times.

Nameck played baseball for Santa Clara University and graduated with a marketing degree.

Nameck is a member of the Board of Directors for the Rosauers Open Golf Tournament benefiting the Vanessa Behan Crisis Nursery. He has been on the board for the Wishing Star Foundation, and also served on the YMCA advisory board. Nameck has also been a spokesman for the United Way and High 5, an anti-drug and alcohol group in area schools.

An avid golfer, Nameck donates his time and services to a number of charity golf events throughout the Northwest. He lives in Spokane with his wife Diane and daughter Kelsey.

KXLY of Spokane will originate all Washington State men's basketball radio broadcasts. Bud Nameck, the 1994 Washington Sportscaster of the Year, has been involved broadcasting Cougar sporting events since 1982. Nameck begins his 12th season calling all of the men's basketball action.

### WSU COUGAR BASKETBALL RADIO NETWORK

Clarkston	KCLK	1430 AM
Colfax	KCLX	1450 AM
Colville	KCVL	1240 AM
Everett	KRKO	1380 AM
Longview	KBAM	1270 AM
Moscow, Idaho	KZFN	106.1 FM
Moscow, Idaho	KRPL	1400 AM
Moses Lake	KBSN	1470 AM
Prosser	KZXR	1310 AM
Seattle	KYCW	1090 AM
Spokane	KXLY	920 AM
Tacoma	KHHO	850 AM
Tri-Cities	KALE	960 AM
Walla Walla	KGDC	1320 AM
Yakima	KUSA	980 AM
Internet	wsucougars.com	
Telephone	Teamline 1-800-846-4700	

# 2004-05 MEDIA ROSTER



1

**Josh Akognon**  
G, 5-11, 185, Freshman  
Petaluma, Calif.



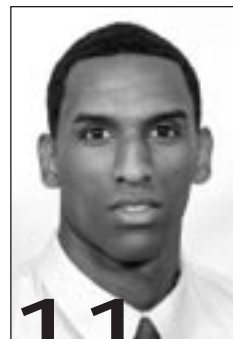
2

**Derrick Low**  
G, 6-1, 177, Freshman  
Honolulu, Hawaii



5

**Chris Schlatter**  
F, 6-7, 220, Senior  
Lafayette, Calif.



11

**Thomas Kelati**  
G, 6-5, 194, Senior  
Walla Walla, Wash.



12

**Randy Green**  
G, 6-4, 187, Junior  
Renton, Wash.



14

**Chris Henry**  
C, 6-9, 248, Freshman  
Santa Ana, Calif.



22

**Shami Gill**  
F, 6-7, 225, Senior  
Mission, British Columbia



23

**Alex Kirk**  
G, 5-10, 170, Freshman  
Prosser, Wash.



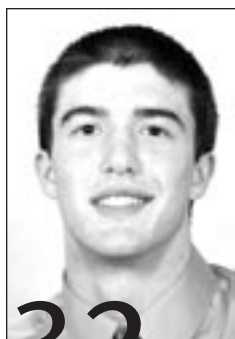
24

**Kyle Weaver**  
G, 6-5, 185, Freshman  
Beloit, Wis.



25

**Isaiah Simmons**  
G, 6-2, 221, Senior  
Tacoma, Wash.



32

**Daven Harmeling**  
F, 6-7, 215, Freshman  
Grand Junction, Colo.



34

**Robbie Cowgill**  
C, 6-10, 200, Freshman  
Austin, Texas



45

**Jeff Varem**  
G, 6-6, 240, Senior  
Benue, Nigeria



**HEAD  
COACH**  
Dick Bennett

